

XMRV Discovery and Prostate Cancer Related Research

David E. Kang^{1,2}, Michael C. Lee^{1,2}, Jaydip Das Gupta², Eric A. Klein^{1,2,3},
and Robert H. Silverman^{2,3}

¹Glickman Urological and Kidney Institute, ²Department of Cancer Biology, Lerner Research
Institute, and ³Taussig Cancer Center, Cleveland Clinic, 9500 Euclid Avenue, Cleveland, OH
44195

*Corresponding author: Robert H. Silverman, Cleveland Clinic, 9500 Euclid Avenue NB40,
Cleveland, OH 44195. Telephone: 216-445-9650, Fax: 216-445- 6269, e-mail: silverr@ccf.org

ABSTRACT

Xenotropic murine leukemia virus-related virus (XMRV) was first reported in 2006 in a study of human prostate cancer patients with genetic variants of the antiviral enzyme, RNase L. Subsequent investigations in North America, Europe, Asia and Africa have either observed or failed to detect XMRV in patients [prostate cancer, chronic fatigue syndrome-myalgic encephalomyelitis (CFS-ME), immunosuppressed with respiratory tract infections] or normal, healthy control individuals. The principal confounding factors are the near ubiquitous presence of mouse derived reagents, antibodies and cells, and often XMRV itself, in laboratories. XMRV infects and replicates well in many human cell lines, but especially in certain prostate cancer cell lines. XMRV also traffics to prostate in a non-human primate model of infection. Here we will review the discovery of XMRV and then focus on prostate cancer related research involving this intriguing virus.

Introduction

The retrovirus, xenotropic murine leukemia virus-related virus (XMRV), has generated both interest and debate within the scientific community and also among physicians, patients and those concerned with maintaining the safety of blood and tissue banks around the world (reviewed in [1,2,3]). Its discovery was based on the hypothesis that viral infections might contribute to hereditary prostate cancer[4]. Currently, seven types of viruses (HPV, EBV, HHV-8, HTLV-1, HBV, HCV, and MCV) are established etiologic agents of different types of human cancers[5,6]. While there is also evidence for the presence of viral infections in prostate cancer, including BKV[7], HPV[8,9], HCMV[10], and EBV[11]), thus far there is no compelling evidence that links viral infections to this disease. However, family history is a risk factor for prostate cancer, and in 2002, a combined positional cloning and candidate gene approach mapped a hereditary prostate cancer susceptibility locus, *HPC1* at 1q24-25 [12,13], to the gene encoding the antiviral protein, RNase L[14]. While several studies have described a link between *RNASEL* and hereditary prostate cancer[14,15,16,17,18], other studies have been unable to confirm the association[19,20,21,22]. RNase L is one of the principal antiviral proteins in innate immunity[23]. Type I interferons produced during viral infections induce the pathogen recognition receptors, OAS1 to 3, which produce 2',5'-oligo(rA) from ATP in response to viral double-stranded RNA. RNase L is present in most mammalian cell types and is activated upon binding to 2',5'-oligo(rA), thus blocking viral infections by means of RNA degradation[24]. Many different types of viruses are susceptible, in particular viruses with single-stranded RNA genomes, including the retrovirus HIV-1[25]. The mapping of *HPC1* to *RNASEL* and the invention of a global viral DNA microarray (aka virochip) provided the impetus and means for renewing the search for viruses in prostate cancer[26].

The realization that an HPC gene encoded an antiviral protein further suggested the possible involvement of viral infections in prostate cancer. To test this hypothesis, men with localized prostate cancer were genotyped for the R462Q (1385nt G→A) variant of *RNASEL*. A

prior study showed that when homozygous this variant doubled the risk of prostate cancer and was implicated in up to 13% of cases[27]. The RNase L Q variant also has about 3-fold reduced enzymatic activity compared with the wild type R variant[27,28]. Following radical prostatectomy, RNA isolated from prostate tumors was converted to labeled cDNA and used to screen for evidence of viral sequences by hybridization to virochips composed of the most conserved sequences of all known human, animal, plant and bacterial viruses[4,26,29]. Because the array contained highly conserved sequences within viral nucleic acids, it can detect viruses not explicitly represented. These studies identified the presence of a gammaretrovirus in 8 (40%) of 20 RNase L R462Q homozygous prostate cancer tissues, and in just 1 (1.5%) of 66 tissues that harbored at least one copy of the wild-type allele (**Fig. 1**). Three XMRV genomes were completely sequenced and were found to share >98% nucleotide and >99% protein sequence identity. Partial sequences were obtained for another six XMRV strains. XMRV is more closely related to the xenotropic and polytropic than to the ecotropic murine retroviruses. XMRV is a canonical gammaretrovirus, with *gag*, *pro-pol* and *env* genes, and is not closely related to any endogenous human retroviral (HERV) elements (**Fig. 2**). In addition, XMRV sequences are not present in any human genomic sequences that have been reported to date. A complete provirus clone for XMRV strain VP62 produced infectious virus in LNCaP or DU145 cells[30,31]. XMRV is able to vigorously infect these and some other cell lines, in particular some prostate cancer cell lines[30,32,33,34], allowing for basic virology studies in cell culture system to be conducted. A timeline of XMRV research shows that there was a lag prior to 2010 when a large increase in research papers on the subject appeared in peer-reviewed scientific journals (**Fig. 3**).

Evidence for and against XMRV in prostate cancer

The possibility of laboratory contamination was carefully considered in the XMRV discovery paper in which several lines of evidence supported genuine human infections[4]. First, XMRV

was detected using (DNase-treated) RNA directly isolated from fresh frozen, primary human prostate tumor tissues that were not placed in cell culture. Nor were these human samples exposed to any cultured cell products or cell culture reagents. Second, the extent of sequence variation between the different *gag* and *pol* sequences from different prostate cancer patients was greater than Taq polymerase error rates which range from 10^{-6} to 10^{-4} (ref. [35] and references therein). These findings suggested natural sequence diversity consistent with independent acquisition of XMRV infections by humans. Third, fluorescence in situ hybridization (FISH) identified XMRV nucleic acid in a small number of stromal cells in tumor-bearing prostate tissue. Fourth, a similar small number of Gag-positive stromal cells were detected in prostate tumor tissues using monoclonal antibody against spleen focus-forming virus Gag with an enhanced alkaline phosphatase red detection method. Fifth, no mouse GAPDH DNA sequences were detected in any of the radical prostatectomy samples providing evidence against contamination from any mouse derived sources. Finally, XMRV was predominantly restricted to RNase L QQ prostate cancer cases. Therefore, both PCR based and non-PCR evidence supported genuine infection of humans.

Recently, however, the human origin of XMRV has been questioned based in part on the near sequence identity of XMRV strain VP62, isolated using human prostate cancer tissue, with XMRV present in a human prostate cancer cell line, 22Rv1[33]. The 22Rv1 cells were derived in the 1990's at Case Western Reserve University from a human prostate cancer xenograft by serial passage in mice after castration-induced regression and relapse, raising the possibility that the virus in those cells originated from the mice rather than the patient[36]. A recent study shows that variation between XMRV sequences in the 22Rv1 cell lines exceeded that of XMRV sequences isolated from human specimens, leading the authors to propose that XMRV might not be an authentic human pathogen[37]. In addition, a recent study concludes that the XMRV in 22Rv1 cells originated from two MLV genomes present in the mice used to passage the xenografts (T. Paprotka et al., 18th Conference on Retroviruses and Opportunistic Infections).

Additional evidence in favor of genuine infections, including some of the same prostate cancer patients as in the discovery study[4], was provided by XMRV integration site mapping experiments[30,38]. DNA isolated from human prostate tissues in a PCR-amplicon-free clean room were sent to UCLA and used to precisely map and sequence XMRV integrations sites in nine separate prostate cancer patients [30,38]. In these prostate cancer tissues, there was a greater tendency for XMRV to integrate near cancer-related genes, microRNA genes, common fragile sites, and cancer breakpoints in comparison to XMRV integration sites in DU145 prostate cancer cells infected in the lab[38]. Those results suggested an *in vivo* selection process for XMRV integrations in certain genes. The viral integration sites in human prostate DNA started precisely after the end of the right-side LTR repeat (5'-...CTTTCA-3') demonstrating correct integration had occurred and ruling out artifactual fusion. These experiments also effectively ruled out direct mouse DNA contamination as a source of the XMRV sequences because LTR sequences were fused to human, not mouse, DNA. However, two of the integration sites are identical to XMRV integration sites obtained with XMRV-infected DU145 cells used in the same studies[38,39,40]. Therefore, it remains to be confirmed whether these two sites, and the other 12 XMRV integration sites, originated from the patients or from cells infected in the laboratory.

Three independent studies supported XMRV infections of prostate cancer patients at prevalence rates in the range of about 10 to 28%. A study from the University of Utah and Columbia University produced evidence for XMRV infection of prostatic malignant epithelial cells *in vivo*[31]. Immunohistochemistry (IHC) performed on 233 prostate cancer specimens and 101 controls with benign prostatic hyperplasia showed protein staining for XMRV in 23% of cancer cases and 4% of controls. IHC was performed using a polyclonal antibody raised in rabbit against whole virus XMRV (produced in 293T cells – a human kidney epithelial cell line). The presence of antibodies against host-derived proteins among the anti-XMRV antibodies is a limitation of this approach and raises questions about whether the signals detected originated from XMRV infections. Quantitative PCR data from the same study detected XMRV DNA in

6.2% of prostate cancer and 2.0% of control specimens, much lower percentages than through IHC. XMRV associated with higher Gleason Index of prostate cancer but there was no correlation with the R462Q RNase L variant[31]. This report suggested that XMRV is a possible etiologic agent for prostate cancer, and not just a passenger virus.

An investigation at Emory University confirmed the presence of XMRV in men with prostate cancer by utilizing three methods, a novel serum-based assay for neutralizing antibodies against XMRV, nested PCR for *env* sequences and FISH [41]. The serologic assay detected neutralizing antibodies in 11 of 40 prostate cancer cases (27.5%). Among 20 *RNASEL* QQ patients, 8 (40%) had neutralizing antibody against XMRV, in agreement with the original report of an association of XMRV infection with the QQ genotype[4]. FISH showed XMRV infection in 5-8% of stromal cells of positive cases, and none in epithelial cells[41]. All three methods were in agreement for 5 XMRV positive cases and 2 XMRV negative cases.

Most recently, a study at Baylor University detected XMRV in 32 of 144 (22%) men from the southern U.S. with prostate cancer using a nested PCR assay for the *env* gene[42]. Patients were more likely to score positive for the presence of XMRV in both tumor and normal tissue than in either type of tissue alone. However, there was no correlation between the presence of XMRV and either the RNase L genotype or clinical parameters of disease. The presence of XMRV in normal tissues suggested that infection might precede prostate cancer.

In support of the presence of XMRV in some prostate cancer patients, a follow-up study at the Cleveland Clinic detected XMRV RNA by nested and quantitative RT-PCR of *env* RNA in expressed prostate secretions of 4 of 32 unselected prostate cancer cases[43]. These findings suggested that XMRV might be present in human semen. However, another study using nested RT-PCR of XMRV *gag* RNA failed to detect XMRV in seminal plasma from HIV-1 infected men in the Netherlands, although some of these subjects were using antiretroviral drugs[44].

Several research efforts have either failed to detect XMRV at all, or demonstrated very low prevalence of infection. In the first of several European studies, an investigation in

Hamburg, Germany found XMRV RNA by nested RT-PCR in only one of 87 cases in non-familial prostate cancer and one of 70 samples from a control population of men with benign prostatic hyperplasia[45]. Both patients contained at least one copy of the wild type R462 RNase L allele. A study from Berlin failed to detect XMRV in 589 prostate cancer tissues and 146 prostate cancer serum samples utilizing nested PCR for *gag* DNA, RT-PCR for *gag* RNA and serology assays for antibodies against XMRV Gag and Env. *RNASEL* status was examined in 76 patients in which 12.9% were QQ[46]. Further studies from Europe demonstrated similar negative results. Using PCR, a study of prostate cancer patients in Ireland found no evidence of XMRV DNA by PCR in 139 peripheral blood mononuclear cell (PBMC) samples nor in prostate tissues of seven *RNASEL* QQ prostate cancer cases and two RQ cases, although the QQ genotype was associated with more aggressive disease[47]. A Dutch study of tissue specimens for 74 sporadic prostate cancer patients showed low detection (1 in 600 to 7,000 cells) in only three cases (4%) using RT-PCR for XMRV *integrase* sequences[48]. An international collaborative study centered in the UK utilized nested PCR with *gag* leader primers on DNA extracted from formalin-fixed and paraffin-embedded (FFPE) prostate cancer tissues from the UK, Thailand and Korea[49]. XMRV-like sequences were detected in 14/292 UK prostate cancers, 5/139 Korean samples and 2/6 specimens from Thailand. However, upon sequencing, some amplified DNA fragments contained the 24 nt deletion upstream of the *gag* ATG start codon, while other amplicons more closely resembled polytropic MLV. Because these results suggested contamination with mouse DNA, a single PCR assay for intracisternal A-type particle (IAP) LTR sequences and a TaqMan qPCR assay for mouse mitochondrial cytochrome oxidase, *cox2*, sequences were performed. These assays are highly sensitive due to large numbers of copies per mouse cell. The presence of the PCR products using XMRV *gag* leader primers in the human DNA samples was completely concordant with IAP sequences, the more sensitive of the two assays for mouse DNA contamination. Therefore, all “XMRV positive” samples were also contaminated with mouse DNA contamination.

Within North America, negative results have also been reported. In Mexico, XMRV RNA was assayed by nested RT-PCR with only a single positive out of 75 controls with an RNase L RR genotype, and no positives among 55 prostate cancer patients, none of which were QQ genotype[9]. An investigation of different bacteria and viruses in prostate cancer found no XMRV DNA in 200 patients using nested PCR to *gag*[50]. More recently a report that included some of the same authors published an absence of XMRV in over 800 specimens using both RT-PCR and IHC[51]. A duplex PCR assay was used on DNA from 161 prostatic adenocarcinomas in which XMRV *gag* sequences were co-amplified with a host gene, but no XMRV was detected. The assay was capable of detecting DNA from a single XMRV infected cell, 22Rv1, in the presence of a large excess of human DNA. In addition, 596 prostate cancers and 452 benign prostate tissue specimens were screened by IHC and all were negative. Recently, prostate tissue DNA from US patients with intermediate to advanced stage prostate cancer were tested by PCR assays for XMRV and MLV variants[52]. In three of 162 cases (1.9%), XMRV DNA was detected and sequenced. These samples were negative for mouse mitochondrial DNA using a highly sensitive assay, ruling out contamination from mouse DNA. There was no association with the RNase L QQ variant, plasma was negative for viral RNA by RT-PCR and all 162 patients were negative by a western blot assay for antibody. The authors concluded that there was no association of XMRV or MLV variants with prostate cancer. However, they also concluded that there was a distinctive XMRV strain in 3 cases, demonstrating a broader diversity in this family of viruses while supporting the case for human infections. A recent study of 110 prostate cancer cases and 40 benign or normal prostate tissues from the Midwestern US concluded no association with XMRV[53]. Although there were 6 PCR positive cases for MLV sequences (5 prostate cancer and 1 non-prostate cancer) all of these were positive for mouse mitochondrial DNA suggesting contamination. There were sporadic IHC positive prostate tissues using anti-XMRV antibody[31] but not with an anti-MLV antibody, and none of the serum samples produced strong neutralization of XMRV infections.

While the reasons for these disparate results have yet to be fully resolved, there are several possibilities. For instance, XMRV may be present at extremely low levels in vivo and therefore the virus could be missed. Because a single provirus can be transcribed into large numbers of RNA transcripts, detection of RNA may be more sensitive than that of DNA. Differences in geographical distribution of the virus, patient selection criteria and methodology (e.g. PCR for *env* vs. *gag* and tissue processing—e.g. fresh frozen tissue vs. formalin fixed and paraffin embedded tissues) are other variables. In some instances positive findings could be tainted by lab or reagent contamination, as is the case for mouse nucleic acids in some preparations of Platinum Taq polymerase (Invitrogen) used in PCR[1,54]. Three examples of lab contamination have recently been published, two in prostate cancer specimens already mentioned[49,53], the other in CFS-ME[55]. Because of the close relationship of XMRV sequence to sequences in mouse genomes, both extraordinary measures to avoid cross-contamination and ultrasensitive methods for detection of mouse DNA and RNA are necessary.

The xenotropic and polytropic retrovirus receptor 1 (XPR1) in human prostatic cells

XPR1 is the cell surface receptor and determinant of viral infectivity for XMRV, X-MLVs, and P-MLVs [30,34,56,57,58,59,60]. It is a 696aa protein with eight putative transmembrane domains and four putative extracellular loops (ECL1-4)[56,58,59]. Despite a common receptor, XMRV has host range and receptor requirements that differ from mouse X/P-MLVs, suggesting adaptations in humans or in intermediate hosts. Residues K500 and T582 in XPR1 ECL3 and ECL4, provide equivalent receptors for X/P-MLV, but not in the case of XMRV[61]. In addition, mouse X-MLV is able to infect all mammals, but XMRV is unique in being restricted in gerbil and hamster cells[61]. There are at least six functionally distinct variants of the XPR1 receptor with varying abilities to support entry by X-MLVs and P-MLVs[62]. While it is unknown whether XMRV found in humans was transmitted directly from infected mice, direct transmission could be reflected in the geographical distribution of virus and/or receptor type in mice, as well as in

the worldwide distribution of prostate cancer cases. Interestingly, the most permissive *Xpr1* receptor allele, *Xpr1^{sv}*, is found in areas of high prostate cancer incidence such as the United States, while the most restrictive allele, *Xpr1^m*, is found in low tumor rate areas such as Japan and eastern Europe[57].

XPR1 RNA was shown to be present in human prostate stromal fibroblasts but absent in prostatic epithelial and smooth muscle cell lines[63], consistent with some previous findings that XMRV viral antigens are present in prostatic stromal fibroblasts of prostate cancer patients[4,41]. However, prostate cancer cells of epithelial origin express XPR1 and are susceptible to XMRV infection[34]. XMRV was able to infect, at low levels, cells that did not express detectable levels of XPR1 RNA, suggesting an alternative pathway of infection[63].

Enhancement of XMRV infectivity by fibrils of prostatic acid phosphatase fragments.

Prostatic acid phosphatase is the predominant protein in human semen, and fragments of this protein form positively charged amyloid fibrils that significantly increase HIV-1 infectivity[64]. These fibrils, aka “semen enhancers of virus infection” (SEVI), capture virus particles and greatly increase viral attachment and entry via cell surface receptors by neutralizing negative-charge repulsion between the HIV-1 virion and the cell surface[65]. SEVI has also been shown to enhance XMRV infections via the XPR1 receptor in human prostate cancer cell line DU145[43]. SEVI enhanced XMRV attachment and fusion while lowering the threshold for infectivity by up to 4,000-fold. XMRV infectivity was enhanced by SEVI in a wide range of different cell types, including primary prostatic epithelial and stromal cells[43]. XMRV infectivity in cell culture was similarly enhanced by human semen, and this was most pronounced at low viral doses. These results, and the presence of XMRV RNA in prostate secretions, suggest sexual transmission as a potential biological mechanism for viral spread, although confirmation by seroprevalence and other epidemiologic studies is required before such a conclusion can be made. However, XMRV infection of rhesus macaques by the IV route showed that the virus

traffics to and infects prostate epithelium within 6 to 7 days of infection[66]. In addition, a separate study, reported in this issue by Sharma *et al.*, demonstrates that XMRV infects the reproductive tracts of both male and female macaques further suggesting the possibility of sexual transmission[67].

Host restriction of XMRV in prostate cancer cell lines

Many host restriction factors are IFN regulated and collectively contribute to the IFN-induced antiviral state[68]. For example, IFNs induce OAS proteins that produce the 2'-5'-oligo(rA) activators of RNase L. As a result, RNase L suppresses replication of a wide range of viruses in cells exposed to IFN[24]. Sustained activation of RNase L also drives cells into apoptosis, a potential anti-tumor cell as well as an anti-viral mechanism[69,70]. Therefore, *RNASEL* mutations could contribute to prostate cancer by allowing clonal expansion of mutant cells that have escaped apoptosis and/or by allowing persistent infection by oncogenic viruses. Accordingly, reduction in RNase L levels by RNAi decreased the IFN antiviral effect against XMRV in DU145 cells[30]. However, in another study decreasing levels of RNase L using an RNAi approach did not enhance XMRV replication in 293T cells[32].

The human APOBEC3 family of cytidine deaminases includes seven members (A3A to H) encoded on chromosome 22 as a gene cluster[71]. A3G causes cytidine deamination in viral minus strand DNA causing G→A hypermutation in the coding strand thus potentially inhibiting infectivity and spread of HIV-1 lacking Vif protein[72,73]. XMRV lacks an inhibitor such as Vif and is highly susceptible to inhibition by A3G[74,75,76,77]. Accordingly, there was characteristic G-to-A hypermutation of XMRV DNA in T cell lines H9 and CEM that express A3G and A3F, but low levels of such mutations in prostate cancer cell lines, LNCaP, DU145, and 22Rv1, that lack A3G[75]. Primary prostatic stromal fibroblasts varied in expression of A3G mRNA from undetectable to moderate levels[76]. These findings suggest that prostate cancer

cells and stromal fibroblast might provide a favorable environment for XMRV infection and replication in vivo.

Groom *et al.* investigated the effects of the murine protein Fv1 and the TRIM5 α family of proteins[74]. XMRV was restricted by Fv1ⁿ and Fv1^b but not restricted by any of 13 TRIM5 proteins tested. However, XMRV was highly susceptible to inhibition by the IFN-inducible protein, tetherin, that links viruses to the plasma membrane during budding[78].

Androgen regulation of XMRV

Transcriptional control of the XMRV genome is mediated by *cis*-acting elements in the 5'-LTR U3 region. This 390-nucleotide segment contains the promoter and enhancers, as well as two glucocorticoid response elements (GRE). Other examples of GREs respond to glucocorticoids, mineralocorticoids, progesterone, and androgens. Furthermore, tropism studies of cultured cells suggest a role for the androgen receptor in promoting XMRV replication[30,32,34,79]. XMRV was readily able to spread and replicate in androgen receptor positive LNCaP cells, but not in various other cell lines that lacked androgen receptor[32]. Dihydrotestosterone treatment of LNCaP cells caused a two-fold and three-fold increase of XMRV transcription and replication, respectively[79]. Conversely, the androgen inhibitors, casodex and flutamide, inhibited XMRV replication by up to three-fold, which suggests that androgen ablation therapy used in prostate cancer treatment could inhibit viral growth[79]. A point mutation in one of the XMRV GREs led to impaired androgen regulation of XMRV transcription and replication[79]. Enhancer elements in the XMRV LTR could impart androgen regulation to integrated host genes, thus potentially contributing to oncogenesis.

Conclusions

While the question of XMRV infections in humans is still unresolved, there are a number of potential mechanisms by which a retrovirus could cause prostate cancer. Retroviruses generally

transform cells by insertional activation of an oncogene, transduction of a host-derived oncogene, or oncogenesis by a viral protein (e.g. the JSRV Env protein)[80,81]. Gammaretroviruses, which lack a host-derived oncogene, typically cause cancer by insertion of the LTR near a cellular proto-oncogene leading to its activation. One can, however, envision possible alternative oncogenic mechanisms. For instance, viral infection in stromal cells might alter the microenvironment thus indirectly promoting neoplastic transformation. Infected stromal cells might induce cytokines, chemokines, or growth factors, creating a microenvironment conducive to tumorigenesis[82,83]. Uncoordinated integration of viral DNA ends is another potential mechanism through which retroviruses may induce genomic alterations. However, it was recently shown that XMRV integration proceeds with high fidelity and involves a coordinated joining of the two viral DNA termini in the host genome flanked by a 4bp direct repeat of host DNA[39].

XMRV does not have direct transforming activity in standard focus formation assays in fibroblast and epithelial cell lines[84,85]. However, XMRV did rarely induce transformation of a rat fibroblast line, suggesting an indirect mode of action. Most likely, in order for XMRV to contribute to tumorigenesis through this mechanism, active viral replication with multiple integration events would be required until integration occurred in a cellular oncogene[84].

Claims of novel human retroviruses have often been met with considerable skepticism and resistance, earning the moniker human “rumor viruses” and XMRV is certainly no exception. While both PCR and non-PCR based evidence from several different laboratories collectively provide support for infections of some prostate cancer patients with XMRV, or similar viruses, an extreme level of caution is required to avoid lab contamination. Finally, only hypothesis-driven research that directly tests for infection and modes of pathogenesis for this virus can answer questions about its importance in disease.

Figure Legends

Figure 1. XMRV Discovery in Prostate Cancer Study[4]. Human prostate cancer tissues were collected in the operating room at the Cleveland Clinic and used to isolate RNA at either the Cleveland Clinic or at UCSF. At UCSF, RNA was used to synthesize labeled cDNA, virochips were probed, RT-PCR was performed for *gag* sequences, and XMRV cDNAs were sequenced. The RNase L genotypes were determined at the Cleveland Clinic (also the site of the IHC and FISH experiments, not shown). A hybridization pattern typical of a gammaretrovirus was obtained almost exclusively from patients with the RNase L QQ genotype (red bands and VP codes for QQ patients). RNase L RQ and RR genotypes are shown in black VP codes).

Figure 2. XMRV Structure and Morphology. (A) Structure of xenotropic murine leukemia virus-related virus showing viral core proteins from the *gag* gene (matrix [MA], capsid [CA],[IN])nucleocapsid [NC] and p12); from *pol* (protease [PR], reverse transcriptase (RT), and integrase [IN]) and the envelope proteins (surface subunit [SU] and transmembrane subunit [TM] from *env*. Viral particles contain a lipid bilayer envelope and two RNA genomes. (B) Transmission electron microscope image of XMRV (courtesy of Dr. John Hackett, Jr., Abbott Diagnostics, Abbott Park, IL).

Figure 3. Timeline of XMRV research. Highlights of XMRV studies are shown, including many of the investigations discussed in this review. The mapping of *HPC1* to *RNASEL* was reported in 2002[14] which led to the discovery of XMRV in 2006 using virochip technology[4]. In 2007, the first infectious clone of was constructed by fusing two overlapping cDNA from prostate cancer patient VP62[30]. In addition, XPR1 was identified as the receptor for XMRV and the first integration sites in humans were reported[30]. In 2008, additional integration sites

were mapped using human prostate cancer tissues[38]. A very low prevalence of XMRV was reported in sporadic prostate cancer patients in Germany[45]. In 2009, XMRV was identified in the human prostate cancer cell line 22Rv1, which had been repeatedly implanted and grown in mice[33]. In addition, a report of XMRV in prostatic malignant epithelium that correlated with tumor aggressiveness appeared[31]. The same year, a study using multiple methods of detection, including PCR, a serology assay for Env and isolation of live virus, showed XMRV in blood of CFS-ME patients, with much lower rates in healthy controls[86]. Studies into XPR1 function and specificity were reported between 2008 and 2010[34,57,60,61,62], including a study showing that whereas most lab strains of mice were resistant to infections, wild mice were susceptible[60]. A study from Germany that used PCR and antibody detection found no evidence of XMRV in prostate cancer[46]. In 2010, the androgen stimulatory effect on XMRV transcription and replication was reported[32,79]. Host restriction factors, such as APOBEC3G and tetherin, were found to be active against XMRV[74,75,76,77,87]. Antiretroviral drugs were screened and some found to potently inhibit XMRV replication in cell culture[87,88,89]. The Asian mouse, *Mus pahari*, was exploited for studies on in vivo infection[89]. MLV-related sequences were found to associate with CFS-ME[90]. Meanwhile, several other studies, based on PCR and serology, failed to detect XMRV in CFS-ME (e.g.[91]). Two studies confirmed XMRV infections of prostate cancer patients[41,42], while other studies failed to detect XMRV in prostate cancer patients in the USA[51,53]. Several assays for the detection of XMRV, including a high throughput automated assay for antibodies against XMRV proteins, were reported[92]. XMRV was reported at a prevalence of almost 10% in immunosuppressed patients with respiratory tract infections in Germany[93]. Papers were published on lab contamination with mouse DNA that confounded the search for XMRV in humans[37,49,53,54,55]. In early 2011, a study on XMRV in a non-human primate model showed wide-spread, persistent infection, including the prostate[66]. The crystal structure of the

XMRV protease was published[94]. Finally, stimulation of XMRV transcription by pro-inflammatory cytokines through an NF- κ B element in the LTR appeared[95].

Acknowledgments

These studies were supported by grants from NIH (NCI) CA103943, US Department of Defense W81XWH-07-1-338; Mal and Lea Bank, the Charlotte Geyer Foundation, Abbott Laboratories, and the Milton and Tamar Maltz Family Foundation.

References

1. Silverman RH, Nguyen C, Weight CJ, Klein EA (2010) The human retrovirus XMRV in prostate cancer and chronic fatigue syndrome. *Nat Rev Urol* 7: 392-402.
2. Stoye JP, Silverman RH, Boucher CA, Le Grice SF (2010) The Xenotropic Murine Leukemia Virus-Related Retrovirus Debate Continues at First International Workshop. *Retrovirology* 7: 113.
3. Klein HG, Dodd RY, Hollinger FB, Katz LM, Kleinman S, et al. (2011) Xenotropic murine leukemia virus-related virus (XMRV) and blood transfusion: report of the AABB interorganizational XMRV task force. *Transfusion* 51: 654-661.
4. Urisman A, Molinaro RJ, Fischer N, Plummer SJ, Casey G, et al. (2006) Identification of a Novel Gammaretrovirus in Prostate Tumors of Patients Homozygous for R462Q RNASEL Variant. *PLoS Pathog* 2: e25.
5. Fan H (2007) A new human retrovirus associated with prostate cancer. *Proc Natl Acad Sci U S A* 104: 1449-1450.
6. Moore PS, Chang Y (2010) Why do viruses cause cancer? Highlights of the first century of human tumour virology. *Nat Rev Cancer* 10: 878-889.
7. Das D, Shah RB, Imperiale MJ (2004) Detection and expression of human BK virus sequences in neoplastic prostate tissues. *Oncogene* 23: 7031-7046.
8. Zambrano A, Kalantari M, Simoneau A, Jensen JL, Villarreal LP (2002) Detection of human polyomaviruses and papillomaviruses in prostatic tissue reveals the prostate as a habitat for multiple viral infections. *Prostate* 53: 263-276.
9. Martinez-Fierro ML, Leach RJ, Gomez-Guerra LS, Garza-Guajardo R, Johnson-Pais T, et al. (2010) Identification of viral infections in the prostate and evaluation of their association with cancer. *BMC Cancer* 10: 326.

10. Samanta M, Harkins L, Klemm K, Britt WJ, Cobbs CS (2003) High prevalence of human cytomegalovirus in prostatic intraepithelial neoplasia and prostatic carcinoma. *J Urol* 170: 998-1002.
11. Grinstein S, Preciado MV, Gattuso P, Chabay PA, Warren WH, et al. (2002) Demonstration of Epstein-Barr virus in carcinomas of various sites. *Cancer Res* 62: 4876-4878.
12. Smith JR, Freije D, Carpten JD, Gronberg H, Xu J, et al. (1996) Major susceptibility locus for prostate cancer on chromosome 1 suggested by a genome-wide search. *Science* 274: 1371-1374.
13. Carpten JD, Makalowska I, Robbins CM, Scott N, Sood R, et al. (2000) A 6-Mb high-resolution physical and transcription map encompassing the hereditary prostate cancer 1 (HPC1) region. *Genomics* 64: 1-14.
14. Carpten J, Nupponen N, Isaacs S, Sood R, Robbins C, et al. (2002) Germline mutations in the ribonuclease L gene in families showing linkage with HPC1. *Nat Genet* 30: 181-184.
15. Agalliu I, Leanza SM, Smith L, Trent JM, Carpten JD, et al. (2010) Contribution of HPC1 (RNASEL) and HPCX variants to prostate cancer in a founder population. *Prostate*.
16. Rokman A, Ikonen T, Seppala EH, Nupponen N, Autio V, et al. (2002) Germline alterations of the RNASEL gene, a candidate HPC1 gene at 1q25, in patients and families with prostate cancer. *Am J Hum Genet* 70: 1299-1304.
17. Rennert H, Bercovich D, Hubert A, Abeliovich D, Rozovsky U, et al. (2002) A novel founder mutation in the RNASEL gene, 471delAAAG, is associated with prostate cancer in Ashkenazi Jews. *Am J Hum Genet* 71: 981-984.
18. Fesinmeyer MD, Kwon EM, Fu R, Ostrander EA, Stanford JL (2011) Genetic variation in RNASEL and risk for prostate cancer in a population-based case-control study. *Prostate*.
19. Downing SR, Hennessy KT, Abe M, Manola J, George DJ, et al. (2003) Mutations in ribonuclease L gene do not occur at a greater frequency in patients with familial prostate

- cancer compared with patients with sporadic prostate cancer. *Clin Prostate Cancer* 2: 177-180.
20. Li H, Tai BC (2006) RNASEL gene polymorphisms and the risk of prostate cancer: a meta-analysis. *Clin Cancer Res* 12: 5713-5719.
 21. Maier C, Haeusler J, Herkommer K, Vesovic Z, Hoegel J, et al. (2005) Mutation screening and association study of RNASEL as a prostate cancer susceptibility gene. *Br J Cancer* 92: 1159-1164.
 22. Wiklund F, Jonsson BA, Brookes AJ, Stromqvist L, Adolfsson J, et al. (2004) Genetic analysis of the RNASEL gene in hereditary, familial, and sporadic prostate cancer. *Clin Cancer Res* 10: 7150-7156.
 23. Chakrabarti A, Jha BK, Silverman RH (2011) New Insights into the Role of RNase L in Innate Immunity. *J Interferon Cytokine Res* 31: 49-57.
 24. Silverman RH (2007) Viral encounters with 2',5'-oligoadenylate synthetase and RNase L during the interferon antiviral response. *J Virol* 81: 12720-12729.
 25. Maitra RK, Silverman RH (1998) Regulation of human immunodeficiency virus replication by 2',5'-oligoadenylate-dependent RNase L. *J Virol* 72: 1146-1152.
 26. Wang D, Coscoy L, Zylberberg M, Avila PC, Boushey HA, et al. (2002) Microarray-based detection and genotyping of viral pathogens. *Proc Natl Acad Sci U S A* 99: 15687-15692.
 27. Casey G, Neville PJ, Plummer SJ, Xiang Y, Krumroy LM, et al. (2002) RNASEL Arg462Gln variant is implicated in up to 13% of prostate cancer cases. *Nat Genet* 32: 581-583.
 28. Xiang Y, Wang Z, Murakami J, Plummer S, Klein EA, et al. (2003) Effects of RNase L mutations associated with prostate cancer on apoptosis induced by 2',5'-oligoadenylates. *Cancer Res* 63: 6795-6801.
 29. Wang D, Urisman A, Liu YT, Springer M, Ksiazek TG, et al. (2003) Viral discovery and sequence recovery using DNA microarrays. *PLoS Biol* 1: E2.

30. Dong B, Kim S, Hong S, Das Gupta J, Malathi K, et al. (2007) An infectious retrovirus susceptible to an IFN antiviral pathway from human prostate tumors. *Proc Natl Acad Sci U S A* 104: 1655-1660.
31. Schlager R, Choe DJ, Brown KR, Thaker HM, Singh IR (2009) XMRV is present in malignant prostatic epithelium and is associated with prostate cancer, especially high-grade tumors. *Proc Natl Acad Sci U S A* 106: 16351-16356.
32. Rodriguez JJ, Goff SP (2010) Xenotropic murine leukemia virus-related virus establishes an efficient spreading infection and exhibits enhanced transcriptional activity in prostate carcinoma cells. *J Virol* 84: 2556-2562.
33. Knouf EC, Metzger MJ, Mitchell PS, Arroyo JD, Chevillet JR, et al. (2009) Multiple integrated copies and high-level production of the human retrovirus XMRV (xenotropic murine leukemia virus-related virus) from 22Rv1 prostate carcinoma cells. *J Virol* 83: 7353-7356.
34. Stieler K, Schulz C, Lavanya M, Aepfelbacher M, Stocking C, et al. (2010) Host range and cellular tropism of the human exogenous gammaretrovirus XMRV. *Virology* 399: 23-30.
35. Bracho MA, Moya A, Barrio E (1998) Contribution of Taq polymerase-induced errors to the estimation of RNA virus diversity. *J Gen Virol* 79 (Pt 12): 2921-2928.
36. Sramkoski RM, Pretlow TG, 2nd, Giaconia JM, Pretlow TP, Schwartz S, et al. (1999) A new human prostate carcinoma cell line, 22Rv1. *In Vitro Cell Dev Biol Anim* 35: 403-409.
37. Hue S, Gray ER, Gall A, Katzourakis A, Tan CP, et al. (2010) Disease-associated XMRV sequences are consistent with laboratory contamination. *Retrovirology* 7: 111.
38. Kim S, Kim N, Dong B, Boren D, Lee SA, et al. (2008) Integration site preference of xenotropic murine leukemia virus-related virus, a new human retrovirus associated with prostate cancer. *J Virol* 82: 9964-9977.

39. Kim S, Rusmevichientong A, Dong B, Remenyi R, Silverman RH, et al. (2010) Fidelity of target site duplication and sequence preference during integration of xenotropic murine leukemia virus-related virus. *PLoS ONE* 5: e10255.
40. Garson JA, Kellam P, Towers GJ (2011) Analysis of XMRV integration sites from human prostate cancer tissues suggests PCR contamination rather than genuine human infection. *Retrovirology* 8: 13.
41. Arnold RS, Makarova, N., Adeboye, Osunkoya, O., Suppiah, S., Scott, T.A., Johnson, N.A.; Bhosle, S.M., Liotta, D., Hunter, E., Marshall, F.F., Ly, H., Molinaro, R.J., Blackwell, J.L., and Petros, J.A. (2010) XMRV Infection in Prostate Cancer Patients: Novel Serologic Assay and Correlation with PCR and FISH. *Urology* In Press.
42. Danielson BP, Ayala GE, Kimata JT (2010) Detection of xenotropic murine leukemia virus-related virus in normal and tumor tissue of patients from the southern United States with prostate cancer is dependent on specific polymerase chain reaction conditions. *J Infect Dis* 202: 1470-1477.
43. Hong S, Klein EA, Das Gupta J, Hanke K, Weight CJ, et al. (2009) Fibrils of prostatic acid phosphatase fragments boost infections with XMRV (xenotropic murine leukemia virus-related virus), a human retrovirus associated with prostate cancer. *J Virol* 83: 6995-7003.
44. Cornelissen M, Zorgdrager F, Blom P, Jurriaans S, Repping S, et al. (2010) Lack of detection of XMRV in seminal plasma from HIV-1 infected men in The Netherlands. *PLoS ONE* 5: e12040.
45. Fischer N, Hellwinkel O, Schulz C, Chun FK, Huland H, et al. (2008) Prevalence of human gammaretrovirus XMRV in sporadic prostate cancer. *J Clin Virol* 43: 277-283.
46. Hohn O, Krause H, Barbarotto P, Niederstadt L, Beimforde N, et al. (2009) Lack of evidence for xenotropic murine leukemia virus-related virus(XMRV) in German prostate cancer patients. *Retrovirology* 6: 92.

47. D'Arcy F, Foley, R., Perry, A., Marignol, L., Lawler, M., Gaffney, E., Watson, R., Fitzpatrick, J., and Lynch, T. (2008) No evidence of XMRV in Irish prostate cancer patients with R462Q mutation. *European Urology Suppl* 7: 271.
48. Verhaegh GW, de Jong AS, Smit FP, Jannink SA, Melchers WJ, et al. (2011) Prevalence of human xenotropic murine leukemia virus-related gammaretrovirus (XMRV) in Dutch prostate cancer patients. *Prostate* 71: 415-420.
49. Robinson MJ, Erlwein OW, Kaye S, Weber J, Cingoz O, et al. (2010) Mouse DNA contamination in human tissue tested for XMRV. *Retrovirology* 7: 108.
50. Sfanos KS, Sauvageot J, Fedor HL, Dick JD, De Marzo AM, et al. (2008) A molecular analysis of prokaryotic and viral DNA sequences in prostate tissue from patients with prostate cancer indicates the presence of multiple and diverse microorganisms. *Prostate* 68: 306-320.
51. Aloia AL, Sfanos KS, Isaacs WB, Zheng Q, Maldarelli F, et al. (2010) XMRV: A New Virus in Prostate Cancer? *Cancer Res* 70: 10028-10033.
52. Switzer WM, Jia, H., Zheng, H., Tang, S., Heneine, W. (2011) No association of xenotropic murine leukemia virus-related viruse with prostate cancer. *PLoS ONE* 6: e19065.
53. Sakuma T, Hue S, Squillace KA, Tonne JM, Blackburn PR, et al. (2011) No evidence of XMRV in prostate cancer cohorts in the Midwestern United States. *Retrovirology* 8: 23.
54. Sato E, Furuta RA, Miyazawa T (2010) An endogenous murine leukemia viral genome contaminant in a commercial RT-PCR Kit is amplified using standard primers for XMRV. *Retrovirology* 7: 110.
55. Oakes B, Tai AK, Cingoz O, Henefield MH, Levine S, et al. (2010) Contamination of human DNA samples with mouse DNA can lead to false detection of XMRV-like sequences. *Retrovirology* 7: 109.

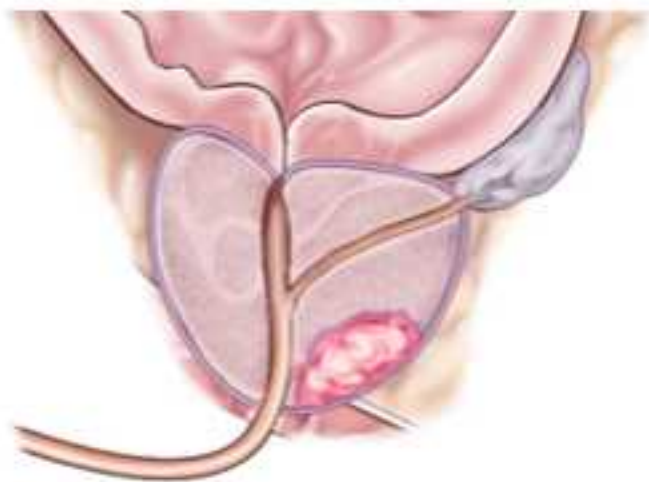
56. Battini JL, Rasko JE, Miller AD (1999) A human cell-surface receptor for xenotropic and polytropic murine leukemia viruses: possible role in G protein-coupled signal transduction. *Proc Natl Acad Sci U S A* 96: 1385-1390.
57. Kozak CA (2010) The mouse "xenotropic" gammaretroviruses and their XPR1 receptor. *Retrovirology* 7: 101.
58. Tailor CS, Nouri A, Lee CG, Kozak C, Kabat D (1999) Cloning and characterization of a cell surface receptor for xenotropic and polytropic murine leukemia viruses. *Proc Natl Acad Sci U S A* 96: 927-932.
59. Yang YL, Guo L, Xu S, Holland CA, Kitamura T, et al. (1999) Receptors for polytropic and xenotropic mouse leukaemia viruses encoded by a single gene at Rmc1. *Nat Genet* 21: 216-219.
60. Baliji S, Liu Q, Kozak CA (2010) Common inbred strains of the laboratory mouse that are susceptible to infection by mouse xenotropic gammaretroviruses and the human-derived retrovirus XMRV. *J Virol* 84: 12841-12849.
61. Yan Y, Liu Q, Wollenberg K, Martin C, Buckler-White A, et al. (2010) Evolution of functional and sequence variants of the mammalian XPR1 receptor for mouse xenotropic gammaretroviruses and the human-derived retrovirus XMRV. *J Virol* 84: 11970-11980.
62. Yan Y, Liu Q, Kozak CA (2009) Six host range variants of the xenotropic/polytropic gammaretroviruses define determinants for entry in the XPR1 cell surface receptor. *Retrovirology* 6: 87.
63. Bhosle S, Suppiah S, Molinaro R, Liang Y, Arnold R, et al. (2010) Evaluation of cellular determinants required for in vitro xenotropic murine leukemia virus-related virus entry into human prostate cancer and noncancerous cells. *J Virol* 84: 6288-6296.
64. Munch J, Rucker E, Standker L, Adermann K, Goffinet C, et al. (2007) Semen-Derived Amyloid Fibrils Drastically Enhance HIV Infection. *Cell* 131: 1059-1071.

65. Roan NR, Munch J, Arhel N, Mothes W, Neidleman J, et al. (2009) The cationic properties of SEVI underlie its ability to enhance human immunodeficiency virus infection. *J Virol* 83: 73-80.
66. Onlamoon N, Das Gupta J, Sharma P, Rogers K, Suppiah S, et al. (2011) Infection, Viral Dissemination, and Antibody Responses of Rhesus Macaques Exposed to the Human Gammaretrovirus XMRV. *J Virol* 85: 4547-4557.
67. Sharma P, Rogers, K.A., Suppiah, S., Molinaro, R.J., Onlamoon, N., Hackett, J., Schochetman, G., Klein, E.A., Silverman, R.H., Villinger, F. (2011) Sexual transmission of XMRV: a potential infection route. *Advances in Virology*.
68. Douville RN, Hiscott J (2010) The interface between the innate interferon response and expression of host retroviral restriction factors. *Cytokine* 52: 108-115.
69. Zhou A, Paranjape J, Brown TL, Nie H, Naik S, et al. (1997) Interferon action and apoptosis are defective in mice devoid of 2',5'-oligoadenylate-dependent RNase L. *Embo J* 16: 6355-6363.
70. Castelli JC, Hassel BA, Wood KA, Li XL, Amemiya K, et al. (1997) A study of the interferon antiviral mechanism: apoptosis activation by the 2-5A system. *J Exp Med* 186: 967-972.
71. Conticello SG, Thomas CJ, Petersen-Mahrt SK, Neuberger MS (2005) Evolution of the AID/APOBEC family of polynucleotide (deoxy)cytidine deaminases. *Mol Biol Evol* 22: 367-377.
72. Sheehy AM, Gaddis NC, Choi JD, Malim MH (2002) Isolation of a human gene that inhibits HIV-1 infection and is suppressed by the viral Vif protein. *Nature* 418: 646-650.
73. Cullen BR (2006) Role and mechanism of action of the APOBEC3 family of antiretroviral resistance factors. *J Virol* 80: 1067-1076.
74. Groom HC, Yap MW, Galao RP, Neil SJ, Bishop KN (2010) Susceptibility of xenotropic murine leukemia virus-related virus (XMRV) to retroviral restriction factors. *Proc Natl Acad Sci U S A* 107: 5166-5171.

75. Paprotka T, Venkatachari NJ, Chaipan C, Burdick R, Delviks-Frankenberry KA, et al. (2010) Inhibition of xenotropic murine leukemia virus-related virus by APOBEC3 proteins and antiviral drugs. *J Virol* 84: 5719-5729.
76. Stieler K, Fischer N (2010) Apobec 3G efficiently reduces infectivity of the human exogenous gammaretrovirus XMRV. *PLoS ONE* 5: e11738.
77. Bogerd HP, Zhang F, Bieniasz PD, Cullen BR (2011) Human APOBEC3 proteins can inhibit xenotropic murine leukemia virus-related virus infectivity. *Virology* 410: 234-239.
78. Neil SJ, Zang T, Bieniasz PD (2008) Tetherin inhibits retrovirus release and is antagonized by HIV-1 Vpu. *Nature* 451: 425-430.
79. Dong B, Silverman RH (2010) Androgen stimulates transcription and replication of xenotropic murine leukemia virus-related virus. *J Virol* 84: 1648-1651.
80. Maeda N, Palmarini M, Murgia C, Fan H (2001) Direct transformation of rodent fibroblasts by jaagsiekte sheep retrovirus DNA. *Proc Natl Acad Sci U S A* 98: 4449-4454.
81. Wootton SK, Halbert CL, Miller AD (2005) Sheep retrovirus structural protein induces lung tumours. *Nature* 434: 904-907.
82. Bhowmick NA, Neilson EG, Moses HL (2004) Stromal fibroblasts in cancer initiation and progression. *Nature* 432: 332-337.
83. Tlsty TD, Hein PW (2001) Know thy neighbor: stromal cells can contribute oncogenic signals. *Curr Opin Genet Dev* 11: 54-59.
84. Metzger MJ, Holguin CJ, Mendoza R, Miller AD (2010) The prostate cancer-associated human retrovirus XMRV lacks direct transforming activity but can induce low rates of transformation in cultured cells. *J Virol* 84: 1874-1880.
85. Metzger MJ, Miller AD (2010) Acutely transforming retrovirus expressing Nras generated from HT-1080 fibrosarcoma cells infected with the human retrovirus XMRV. *J Virol* 84: 7908-7910.

86. Lombardi VC, Ruscetti FW, Das Gupta J, Pfof MA, Hagen KS, et al. (2009) Detection of an infectious retrovirus, XMRV, in blood cells of patients with chronic fatigue syndrome. *Science* 326: 585-589.
87. Smith RA, Gottlieb GS, Miller AD (2010) Susceptibility of the human retrovirus XMRV to antiretroviral inhibitors. *Retrovirology* 7: 70.
88. Singh I, Gorzynski, JE, Drobysheva D, Bassit, L, Shinazi, RF (2010) Raltegravir is a potent inhibitor of XMRV, a virus implicated in prostate cancer and chronic fatigue syndrome. *PLoS ONE* 5: e948.
89. Sakuma T, Tonne JM, Squillace KA, Ohmine S, Thatava T, et al. (2011) Early events in retrovirus XMRV infection of the wild-derived mouse *Mus pahari*. *J Virol* 85: 1205-1213.
90. Lo SC, Pripuzova N, Li B, Komaroff AL, Hung GC, et al. (2010) Detection of MLV-related virus gene sequences in blood of patients with chronic fatigue syndrome and healthy blood donors. *Proc Natl Acad Sci U S A* 107: 15874-15879.
91. Erlwein O, Kaye, S., McClure, M.O., Weber, J., Wills, G., Collier, D., Wessely, S., Cleare, A. (2010) Failure to detect the novel retrovirus XMRV in chronic fatigue syndrome. *PLoS ONE* 5: e8519.
92. Qiu X, Swanson P, Luk KC, Tu B, Villinger F, et al. (2010) Characterization of antibodies elicited by XMRV infection and development of immunoassays useful for epidemiologic studies. *Retrovirology* 7: 68.
93. Fischer N, Schulz C, Stieler K, Hohn O, Lange C, et al. (2010) Xenotropic murine leukemia virus-related gammaretrovirus in respiratory tract. *Emerg Infect Dis* 16: 1000-1002.
94. Li M, Dimaio F, Zhou D, Gustchina A, Lubkowski J, et al. (2011) Crystal structure of XMRV protease differs from the structures of other retropepsins. *Nat Struct Mol Biol* 18: 227-229.

95. Sakakibara S, Sakakibara K, Tosato G (2011) NF- κ B Activation Stimulates Transcription and Replication of Retrovirus XMRV in Human B-Lineage and Prostate Carcinoma Cells. *J Virol* 85: 3179-3186.



Prostate Cancer
Tissue

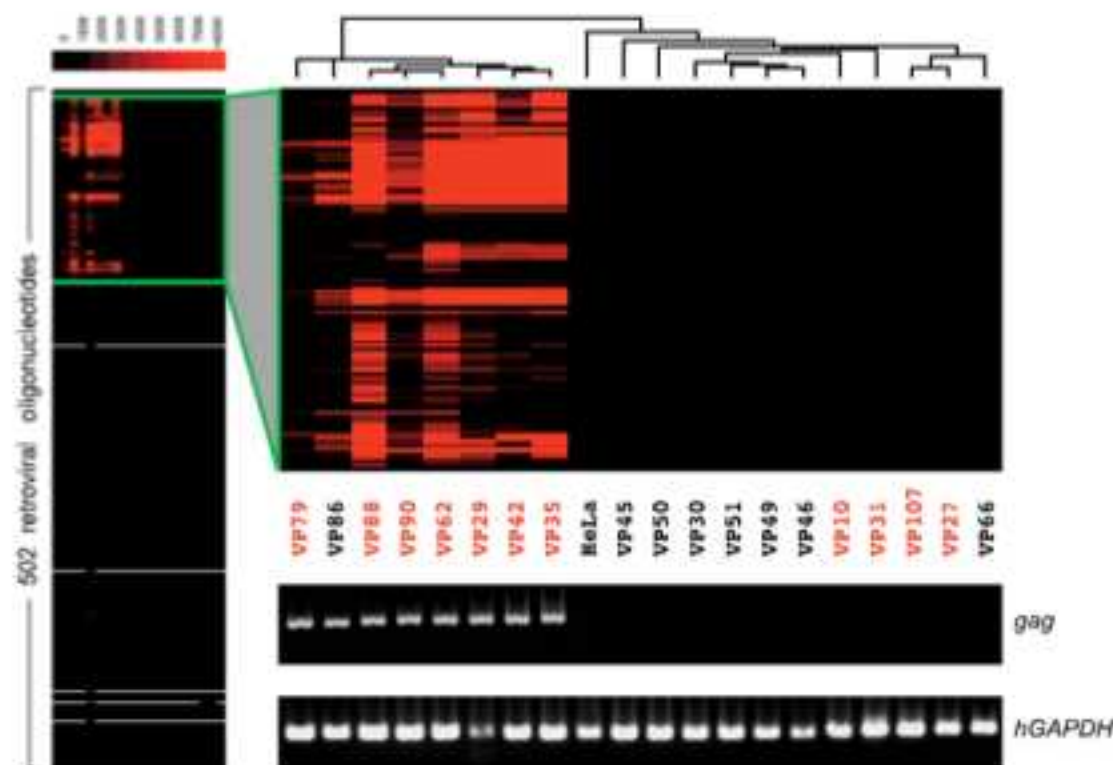


RNA → cDNA



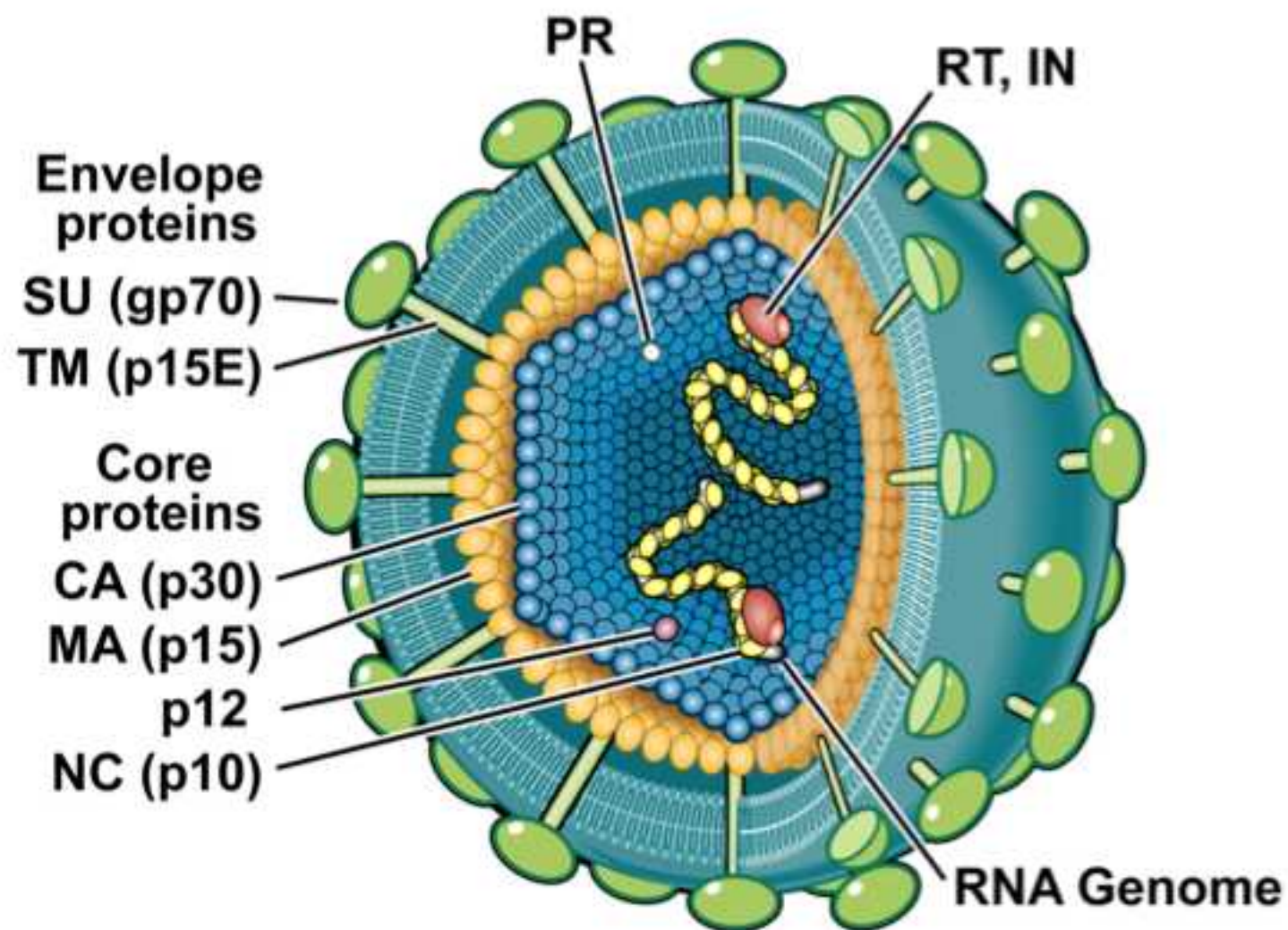
Virochip

Virochip and *gag*
RT-PCR Detected
Retroviral
Sequences [4]



Red VP= homozygous for R462Q RNase L Variant

A.



B.

